

① Pintura Mobiliari: Color blau Miralda-santa comida Oikos Pallas ref. 372

② Garlanda de paper color blanc

③ Bibliografia Llibres
 Abad, Mercedes, Mayra Bosada, and Llorenç Torrado. Vaixella Imaginària = . 1st ed. [Barcelona]: Food Cultura Museum, 2005.

Art És Just Un Mot, Idees I Actituds. 1st ed. Barcelona: Generalitat de Catalunya, 1992.

Badia i Cardús, Montserrat. Agnus Dei, L'art Romànic I Els Artistes Del Sxx. 1st ed. Barcelona: Museu Nacional d'Art de Catalunya, MNAC, 1995.

Cien Años De Cultura Catalana, 1880-1980. 1st ed. [Madrid]: Ministerio de Cultura, Dirección General del Patrimonio Artístico, Archivos y Museos, 1980.

Combaïa Dexeus, Victoria. Barcelona, Paris, New York. 1st ed. [Barcelona]: Generalitat de Catalunya, Departament de Cultura, 1985.

Magiciens De La Terre. 1st ed. Paris: Centre Georges Pompidou, 1989.

Miralda, Antoni and Llorenç Torrado. Mona A Barcelona . 1st ed. Barcelona: Polígrafa, 1980.

Miralda, Antoni, Alberto Anaut, and Museo Nacional Centro de Arte Reina Sofía. De Gustibus Non Disputandum. 1st ed. Madrid: Museo Nacional Centr o de Arte Reina Sofía, 2010.

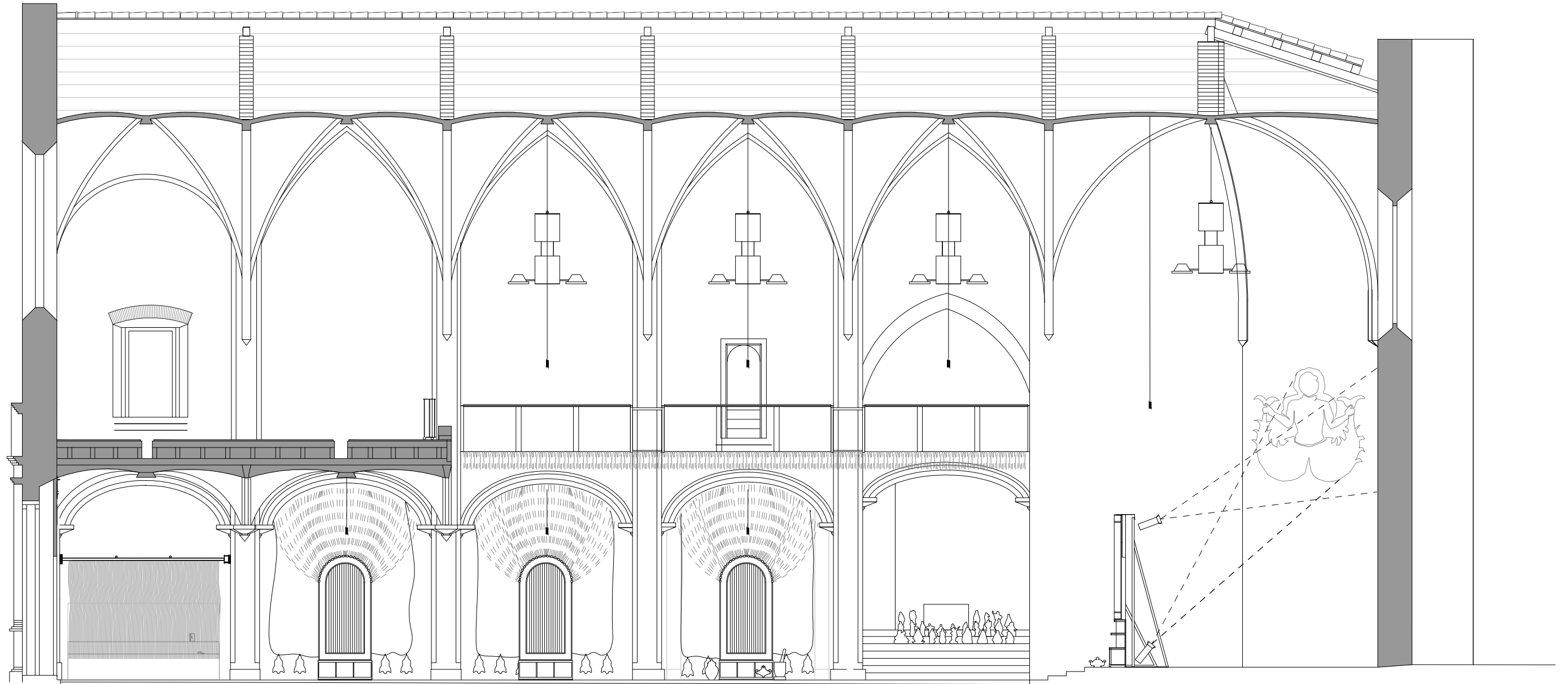
Miralda, Antoni. Miralda . 1st ed. Barcelona: Fundació "la Caixa", 1995.

Swartz, Jeffrey and Antoni Miralda. Power Food Lexicom. 1st ed. Palma de Mallorca: Es Baluard, Museu d'Art Modern i Contemporani de Palma, 2008.

As built - SANTA COMIDA

Capella dels Àngels

21/02/2017



Cortina collar
Ofrenes

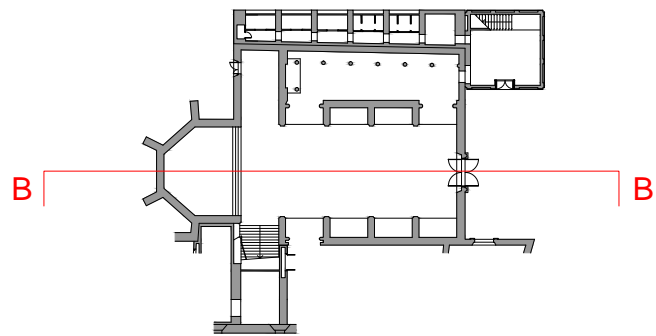
Capella 1:
Elegua
Color Vermell/Negre

Capella 2:
Ogun
Color Verd

Capella 3:
Yemoja
Color Blau

Santa Comida on wheels
Tv

Altar:
Obatala

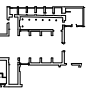


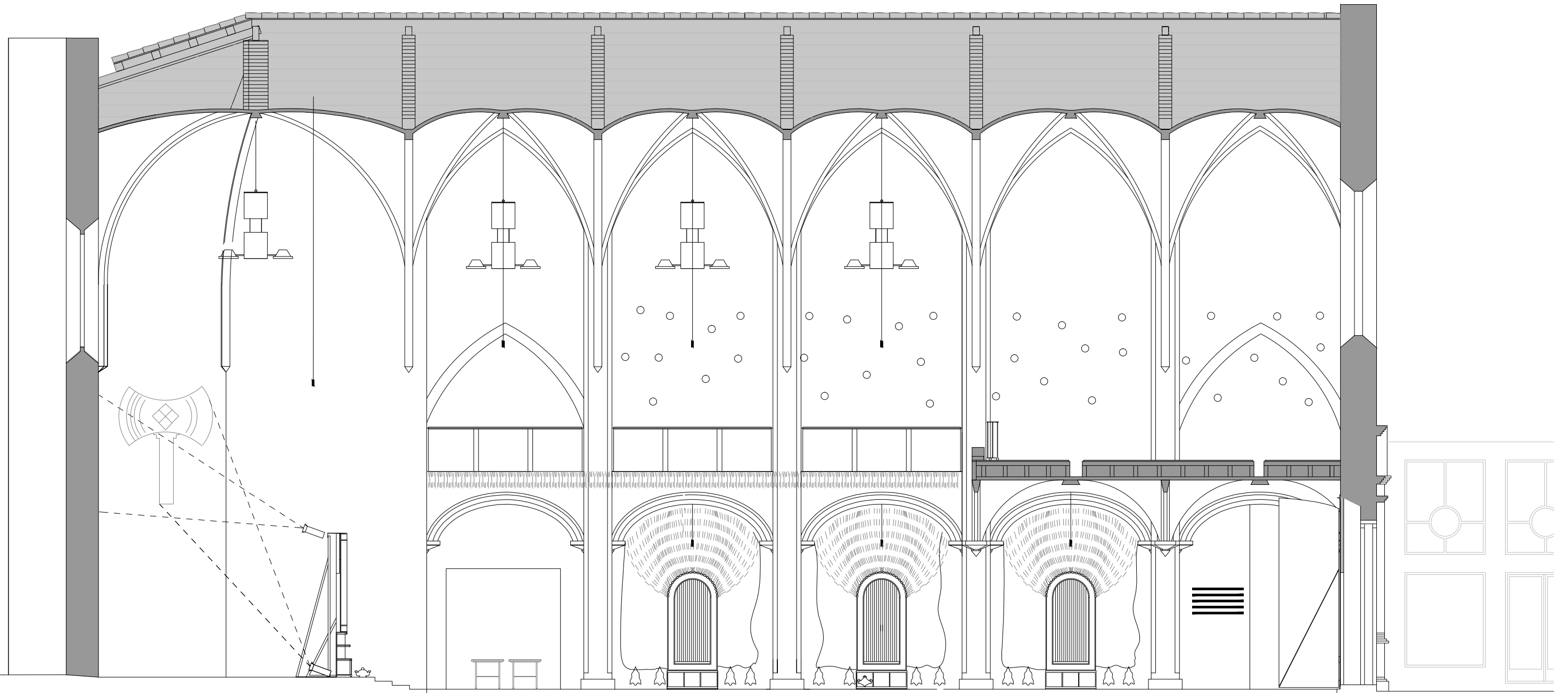
As built - SANTA COMIDA
Capella dels Àngels

21/02/2017

0 1 5m

MUSEU D'ART CONTEMPORANI DE BARCELONA . M A C B A .





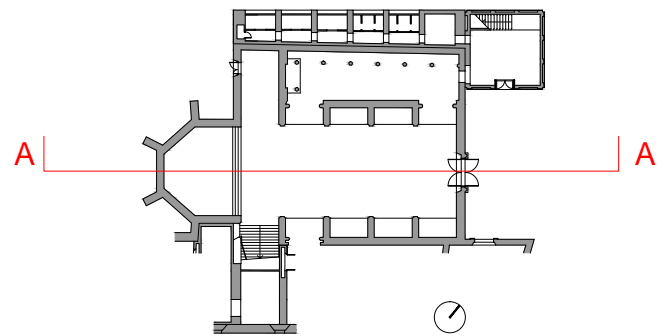
Altar:
Obatala

Capella 6:
Sango
Color Vermell

Capella 5:
Ojun
Color Groc

Capella 4:
Babalu Aye
Color Violeta

Text

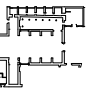


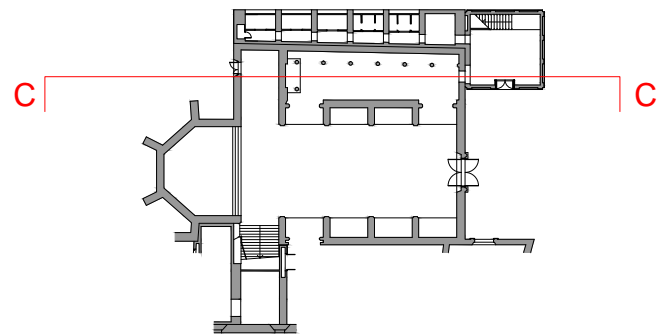
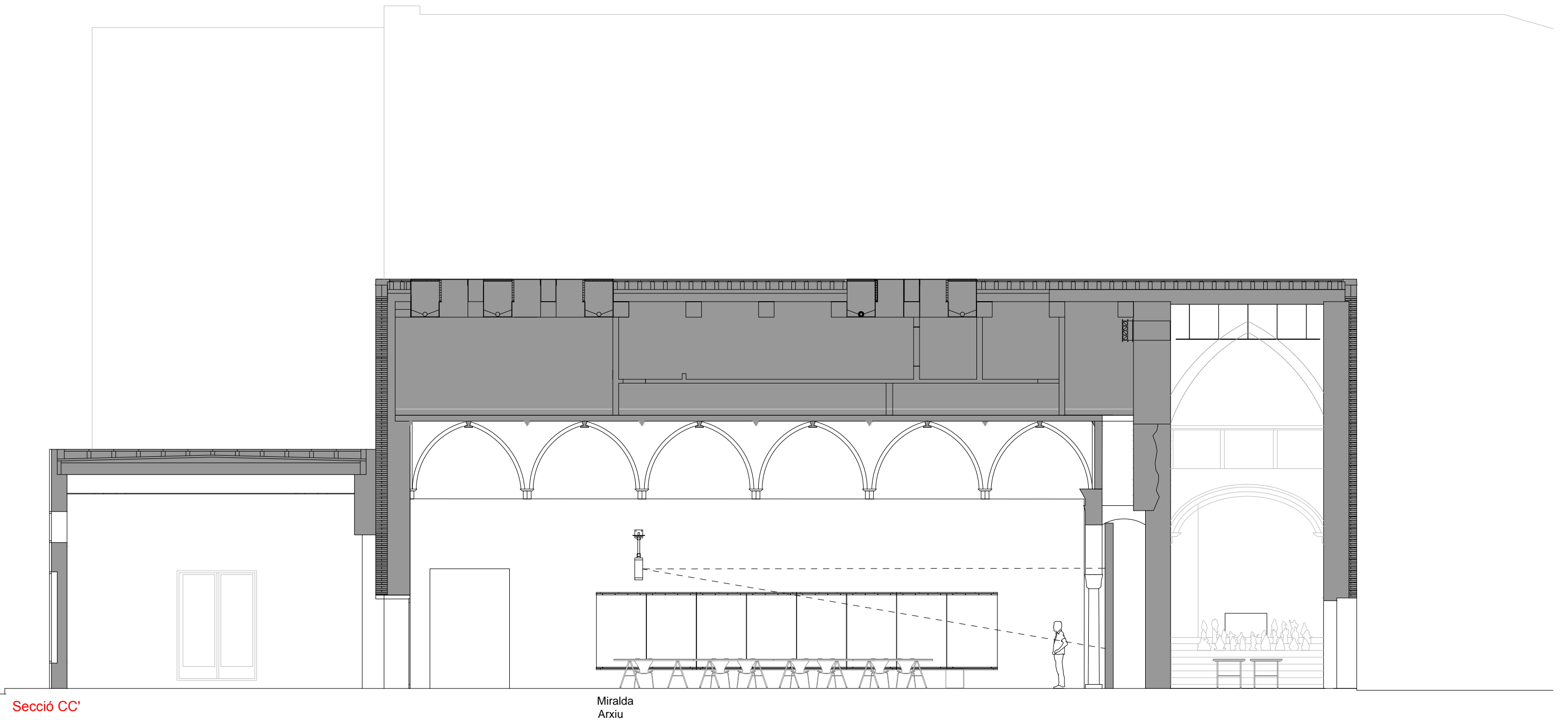
As built - SANTA COMIDA
Capella dels Àngels

21/02/2017

0 1 5m

MUSEU D'ART CONTEMPORANI DE BARCELONA . M A C B A .



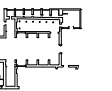


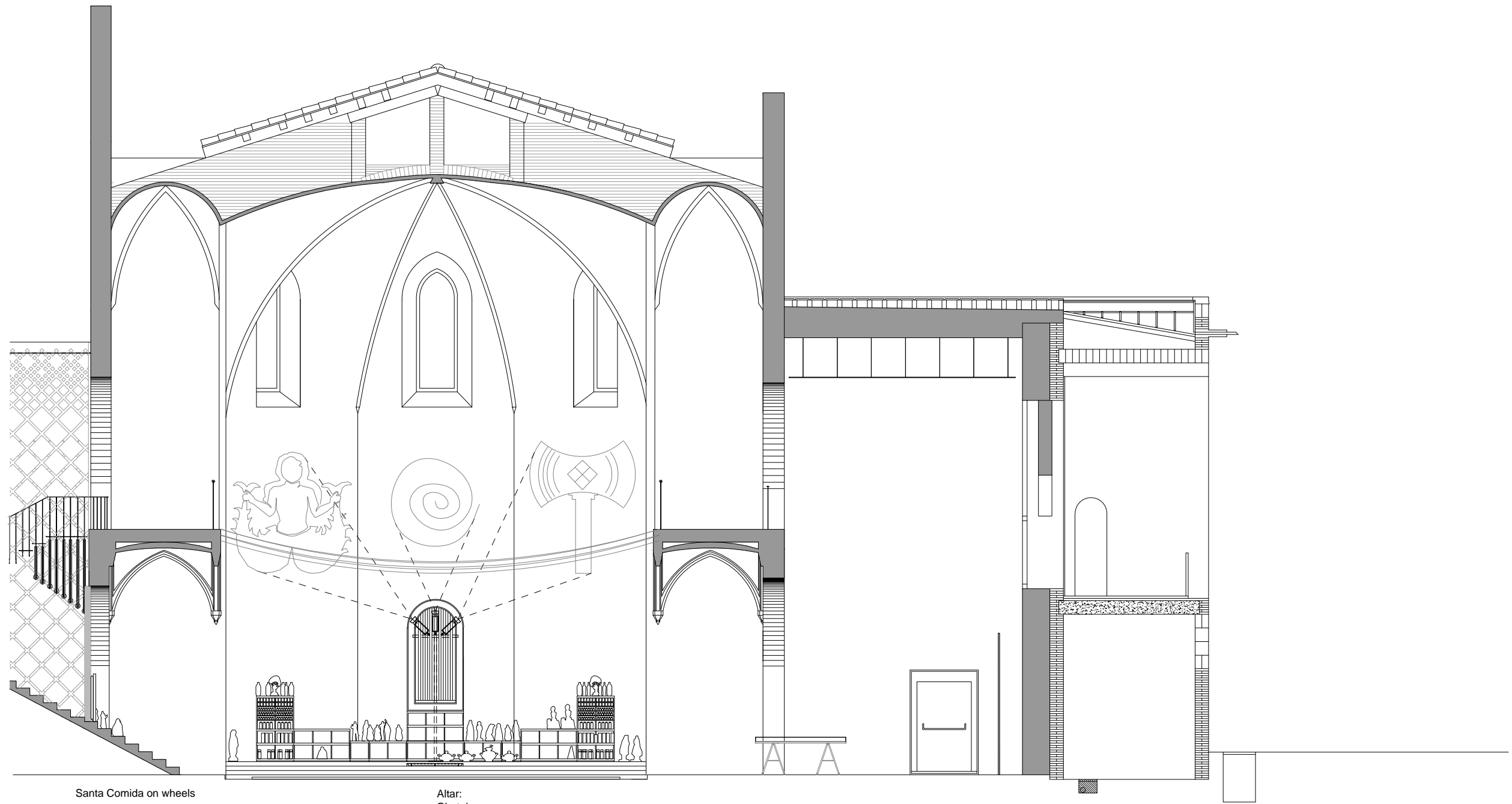
As built - SANTA COMIDA
Capella dels Àngels

21/02/2017

0 1 5m

MUSEU D'ART CONTEMPORANI DE BARCELONA . M A C B A .

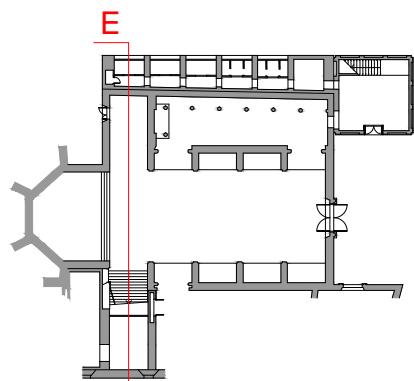




Santa Comida on wheels

Altar:
Obatala

Secció E

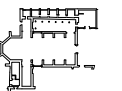


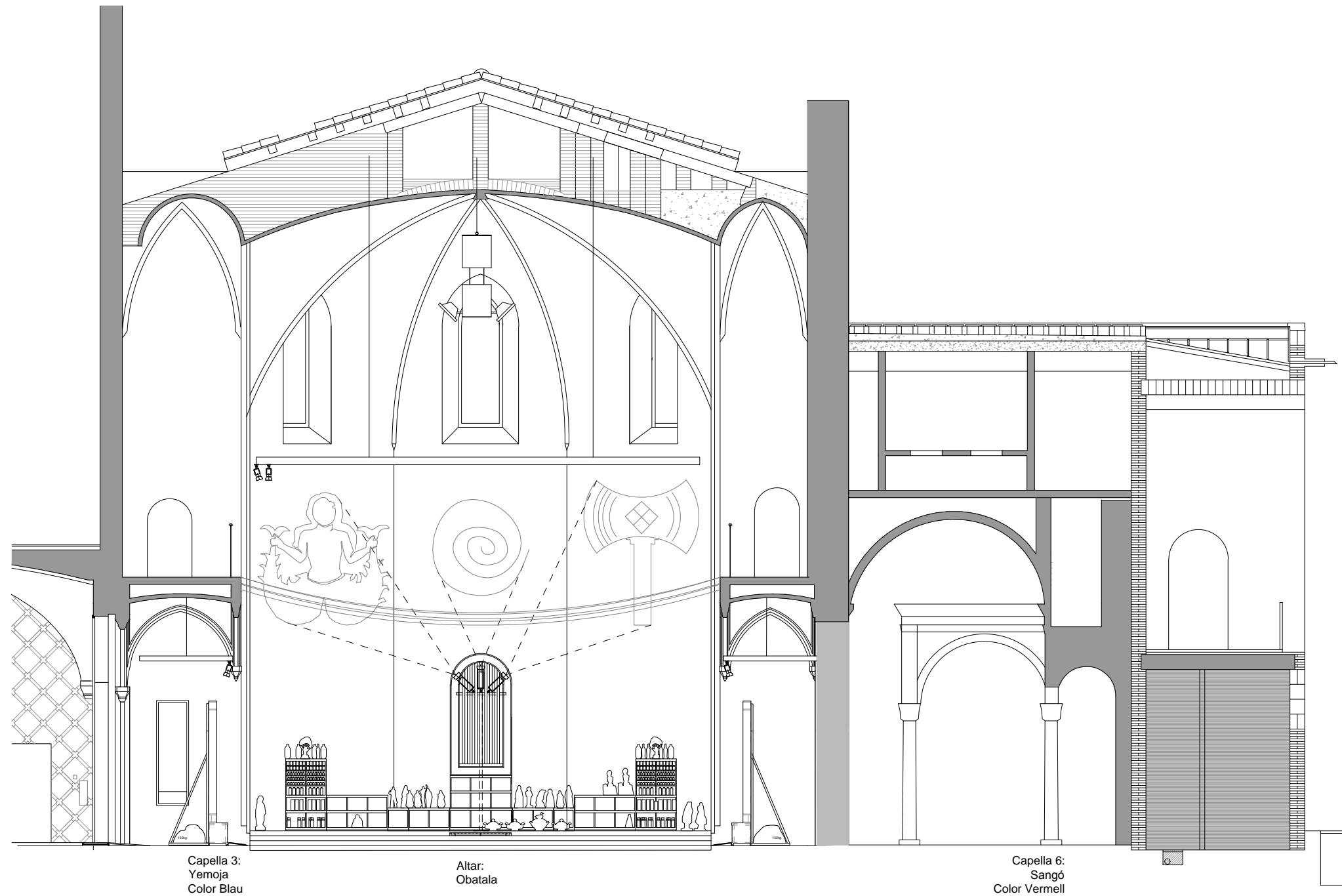
As built - SANTA COMIDA
Capella dels Àngels

21/02/2017

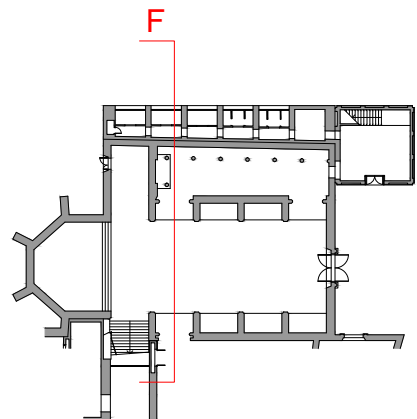
0 1 5m

MUSEU D'ART CONTEMPORANI DE BARCELONA . M A C B A .





Secció F

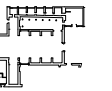


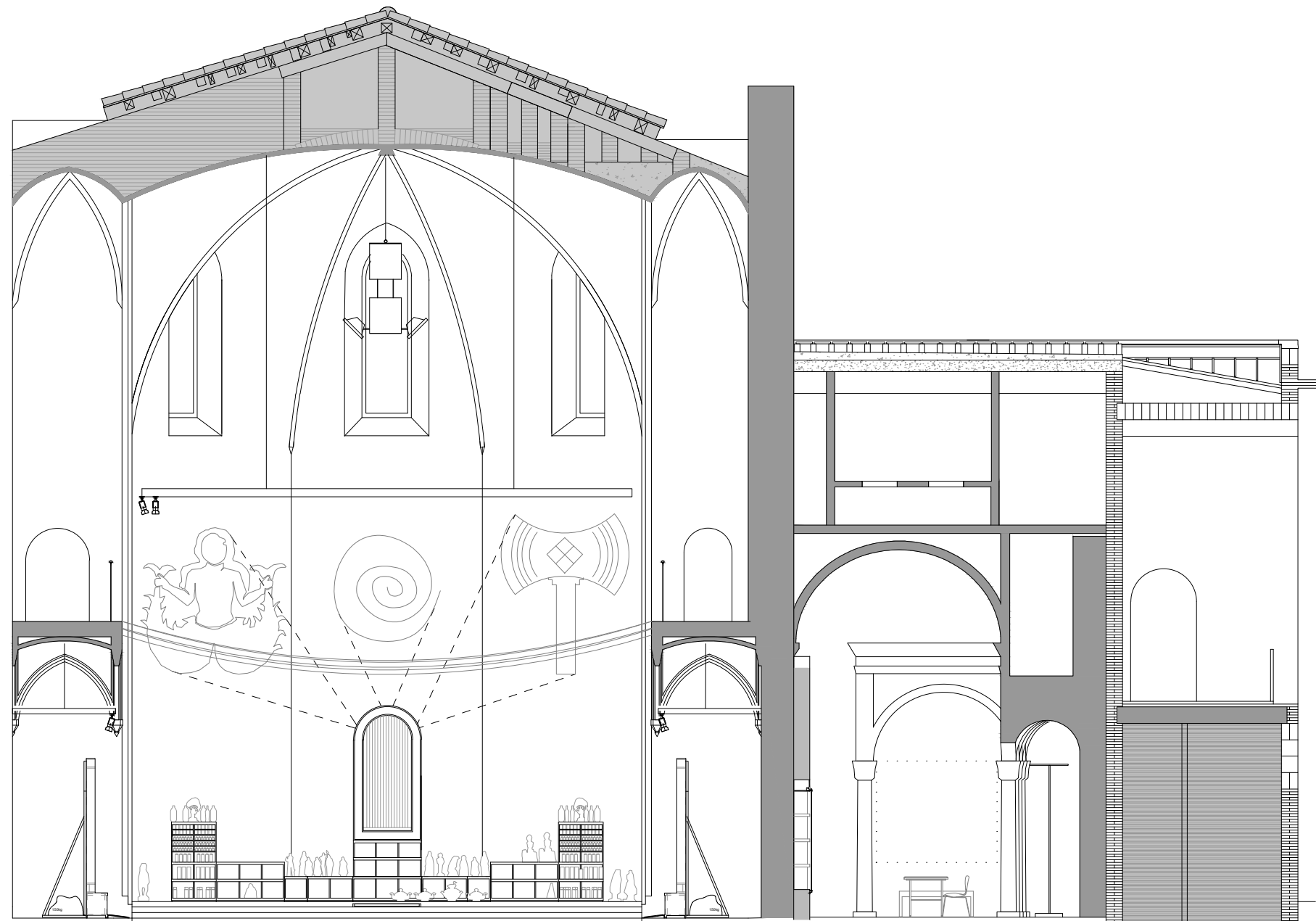
As built - SANTA COMIDA
Capella dels Àngels

21/02/2017

0 1 5m

MUSEU D'ART CONTEMPORANI DE BARCELONA . M A C B A .



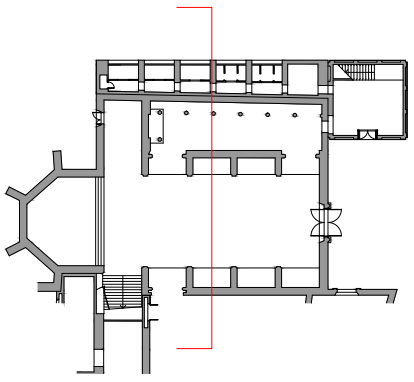


Capella 2:
Ogun
Color Verd

Altar:
Obatala

Capella 5:
Ojun
Color Groc

BB'

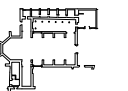


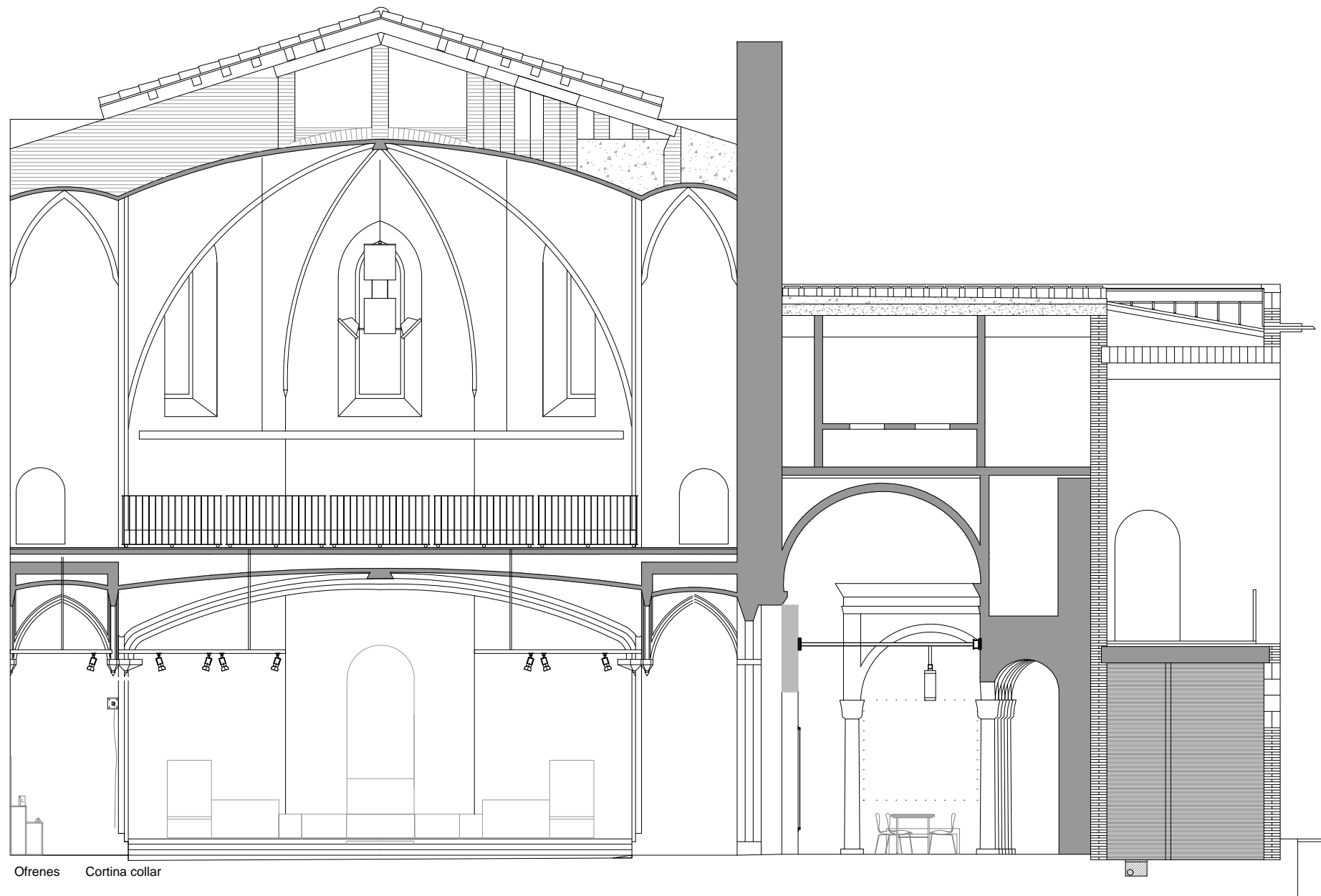
As built - SANTA COMIDA
Capella dels Àngels

21/02/2017



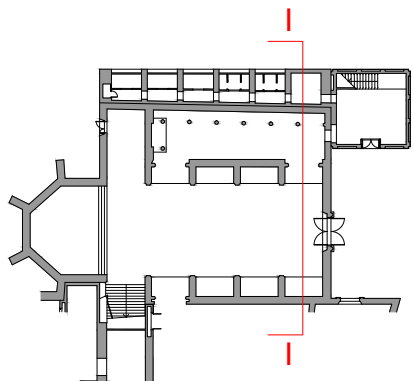
MUSEU D'ART CONTEMPORANI DE BARCELONA . M A C B A .





Ofrenes Cortina collar

Secció I



As built - SANTA COMIDA
Capella dels Àngels

21/02/2017

0 1 5m

MUSEU D'ART CONTEMPORANI DE BARCELONA . M A C B A .

